

T estpassport考题



质 量 更 高 服 务 更 好

免费半年更新服务
<http://www.testpassport.cn>

Exam : **70-270**

Title : Installing, Configuring, and
Administering Microsoft
Windows XP Professional

Version : Demo

1. You are a desktop administrator for your company. A company user reports that he is unable to use his Bluetooth-enabled mobile phone with his Bluetooth-enabled Windows XP Professional computer. He is trying to play audio from the phone through the speakers on his computer.

You verify that other Bluetooth devices work properly with the user's computer. You test the speakers to make sure they are in working order. You also verify that the mobile phone can send output to a computer.

You then discover that the phone cannot detect the computer.

You need to ensure that the user can use the phone with his computer. What should you do?

- A. Place the phone in Bluetooth discovery mode.
- B. Place the user's computer in Bluetooth discovery mode.
- C. Add the phone and the computer to the same Bluetooth Personal Area Network (PAN).
- D. Install mobile phone synchronization software on the user's computer.

Answer: B

2. You are a desktop administrator for your company. You are responsible for deploying a new application.

The application is packaged in an .msi file.

You need to deploy the application to only three users in the company. The .msi file contains all of the information necessary to correctly install the application.

You need to install the application so that users see information about the installation progress, but no other user interface is displayed during the installation. What should you do?

- A. Use the Msiexec.exe program to perform a quiet installation of the application.
- B. Use the Msiexec.exe program to perform a passive installation of the application.
- C. Create a Group Policy object (GPO) that assigns the application. Link the GPO to the site containing the users who will use the application.
- D. Create a Group Policy object (GPO) that advertises the application. Link the GPO to the domain.

Answer: B

3. You are a desktop administrator for your company. You need to deploy a new application. The application is packaged in an .msi file.

The application will be used by only a small number of users. You plan to install the application by using the Msiexec.exe program.

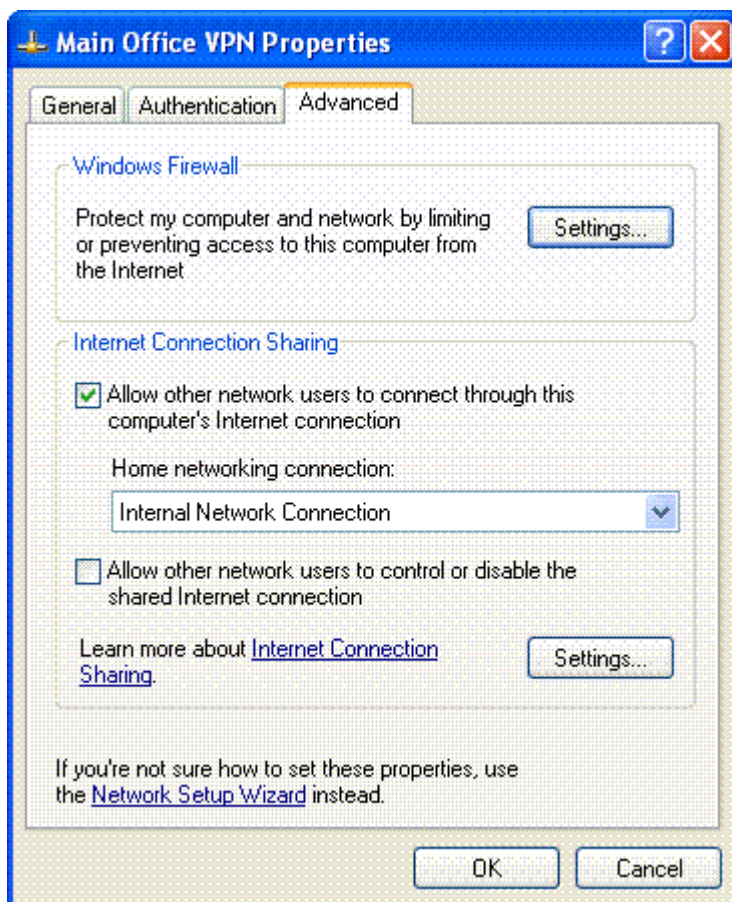
You need to ensure that the installation process does not display a user interface. What should you do?

- A. Manually perform a passive installation of the application.
- B. Manually perform a quiet installation of the application.
- C. Use a logon script to run the Msiexec.exe program.
- D. Use the Runas utility to run the Msiexec.exe program.

Answer: B

4. You are the network administrator for one of your company's branch offices. Ten employees work in the branch office. All client computers in the branch office run Windows XP Professional. All client computers have manually configured IP addresses in the 192. 168. 1. 0/24 range.

The branch office has a cable modem connection to the Internet. All employees in the branch office need access to the main office by means of a virtual private network (VPN) connection over the Internet. The VPN connection is configured as shown in the exhibit. (Click the Exhibit button.)



Employees in the branch office report that they cannot access resources that are located on the main office network. You investigate and discover that you can establish a VPN connection locally on a client

computer named Pro1 and can access main office network resources. However, you cannot connect to Pro1 from other computers on the branch office network.

You want all employees in the branch office to be able to access main office network resources by means of the VPN connection on Pro1. What should you do?

- A. Disable Windows Firewall on the main office VPN connection.
- B. Add a port exception to Windows Firewall to allow incoming PPTP traffic on the main office VPN connection.
- C. Select the Allow other network users to control or disable the shared Internet connection check box.
- D. Configure all client computers in the branch office to obtain IP addresses automatically.

Answer: D

5. You are a help desk technician for your company. Stefan and Irene are software developers for the company. Stefan is developing a Web application on his Windows XP Professional computer. The computer is named Stefan132. All client computers use Microsoft Internet Explorer 6.0 or later as their Web browser.

When Irene types `http://Stefan132` in the Address bar of her Web browser, she cannot access the Web application. However, Stefan can access the Web application by typing `http://localhost` or `http://Stefan132` in the Address bar of his Web browser. He can also access resources on the company network.

When you run the Ping command on your computer, you cannot connect to Stefan's computer. When you attempt to access `http://Stefan132` from your computer, Internet Explorer displays "° DNS or Server Error"

You need to ensure that Irene can access the Web application on Stefan's computer. First, you establish a Remote Assistance connection to Stefan's computer

What should you do next on Stefan's computer

- A. Run the `IPconfig /renew` command.
- B. Stop and then restart the World Wide Web Publishing service.
- C. Ensure that the Everyone group has Allow - Full Control permission on the Inetpub folder.
- D. In the properties of the Local Area Connection connection, allow a Windows Firewall exception for port 80.

Answer: D

6. You are the administrator of a Windows XP Professional computer named Pro1. The computer is connected to the Internet. Pro1 provides Internet access to eight other Windows XP Professional computers that are connected to Pro1.

You enable Internet Connection Sharing (ICS) and Windows Firewall on Pro1.

You run an application named App1 on Pro1. App1 communicates with an online training company on the Internet. To display an online seminar, the training company needs to contact the App1 application at port 5800.

You want to ensure that the training company can connect to the App1 application. What should you do?

- A. Configure Windows Firewall to enable the Internet Control Message Protocol (ICMP) Allow redirect option. Then start the App1 application that opens port 5800.
- B. Create a new service exception named App1. Use port 5800 as both the external and internal port number.
- C. Edit the %systemroot%\System32\Drivers\Etc\Services file on Pro1 to include a service definition named App1 for port 5800.
- D. Change the TCP/IP settings on Pro1 to enable TCP/IP filtering. Permit network traffic on port 5800.

Answer: B

7. You are the desktop administrator for your company. The company's network contains a RIS server, a DHCP server, and a DNS server.

You need to install Windows XP Professional on a computer that does not have a CD-ROM drive. The computer has the following configuration:

• Pentium III -GHz processor

• -GB hard disk

• 128 MB of RAM

• a modem in the first PCI slot

• an Ethernet card in the last ISA slot

You attempt to install Windows XP Professional on the computer by using a RIS bootable floppy disk. However, you are unable to connect to the RIS server.

What should you do?

- A. Move the Ethernet card to the first ISA slot.

- B. Remove the Ethernet card and replace it with an Ethernet card that is PXE compliant.
- C. Share the RIS image on the RIS server. Create a network bootable floppy disk. Insert the floppy disk, and install Windows XP Professional from the share.
- D. Place the NDIS network drivers in the root directory of the RIS bootable floppy disk. Use the floppy disk to connect to the RIS server.

Answer: B

8. You are the desktop administrator for your company. You successfully perform a clean installation of Windows XP Professional on drive C of a computer that is used by an employee named Susan.

Susan is a software developer. She wants her computer to have a dual-boot configuration so that she can use either Windows XP Professional or Windows 2000 Professional. She installs Windows 2000 Professional on drive G.

After installing Windows 2000 Professional, Susan restarts her computer and chooses to start Windows XP Professional. When Windows XP Professional starts, Susan sees the following error message, which is also shown in the exhibit. (Click the Exhibit button.)



"Windows 2000 could not start because the following file is missing or corrupt:
\WINDOWS\SYSTEM32\CONFIG\SYSTEM"

However, Susan restarts her computer and is able to successfully start Windows 2000 Professional.

You want Susan's dual-boot configuration to function properly. You start Susan's computer and choose to start Windows 2000 Professional.

What should you do next?

- A. Copy the NTLDR file and the Ntdetect.com file from the i386 folder on the Windows XP Professional CD-ROM to the root directory of drive C.
- B. Copy the NTLDR file and the Ntdetect.com file from the i386 folder on the Windows XP Professional CD-ROM to the root directory of drive G.
- C. Restore the C:\Windows\System32\Config\System file from a recent backup.
- D. Restore the G:\Windows\System32\Config\System file from a recent backup.

Answer: A

9. You are the desktop administrator for your company's sales department. Katrin is a user in the sales department. You need to upgrade Katrin's Windows 2000 Professional computer to Windows XP Professional.

Philippe is the network administrator. He previously downloaded updated Setup files and placed them on a server named Server1, in a shared folder named Updates. Philippe has successfully installed computers by using these updated Setup files.

You want to ensure that these updated Setup files are automatically installed on Katrin's computer during the upgrade. Which command should you run to start Setup?

- A. Winnt32. exe /dushare:\\server1\updates
- B. Winnt32. exe /copydir:\\server1\updates
- C. Winnt32. exe /dupprepare:\\server1\updates
- D. Winnt32. exe /copysource:\\server1\updates

Answer: A

10. You are the desktop administrator for your company's sales department. You need to perform a clean installation of Windows XP Professional on a computer that currently runs Windows 98.

You start the installation. The text-based portion of Setup finishes successfully. Before the GUI-based portion of Setup starts, the computer stops responding. You investigate and discover that there is a problem with a device driver.

You want to know which device is causing the problem. What should you do?

- A. Modify the Boot.ini file to include the /fastdetect switch.

- B. Modify the Boot.ini file to include the /sos switch.
- C. Restart Setup by using the /dudisable switch.
- D. Restart Setup by using the /dushare switch.
- E. Restart the computer. From the Recovery console, read the Dr. Watson log.
- F. Restart the computer. From the Recovery console, read the Comsetup.log file.

Answer: B

11. You are the desktop administrator for your company's sales department. The company's network contains a RIS server.

You need to install Windows XP Professional on a computer that has a SCSI disk subsystem. You start the computer by using the Windows XP Professional CD-ROM, and you begin the installation. However, Setup reports that it cannot find any disks on which to install Windows XP Professional.

You start the computer by using a RIS bootable floppy disk, and you receive the same result. What should you do?

- A. Add an answer file to the root directory of the RIS bootable floppy disk.

Start the computer by using the RIS bootable floppy disk, and run Setup by using RIS.

- B. Add the SCSI-controller driver to the root directory of the RIS bootable floppy disk.

Start the computer by using the RIS bootable floppy disk, and run Setup by using RIS.

- C. Start the computer by using the Windows XP Professional CD-ROM, and run Setup.

After Setup starts, provide an answer file on a floppy disk.

- D. Start the computer by using the Windows XP Professional CD-ROM, and run Setup.

After Setup starts, provide a SCSI-controller driver on a floppy disk.

- E. Start the computer by using the Windows XP Professional CD-ROM, and run Setup.

After Setup starts, provide the appropriate HAL on a floppy disk.

Answer: D

12. You are the desktop administrator for your company. You are responsible for automating the deployment of Windows XP Professional to new computers in your company. You are preparing a Windows XP Professional computer, which you will use to test disk imaging.

You install Windows XP Professional on the test computer and run the Sysprep utility. You use a

third-party software package to create a disk image. You apply the disk image to a new computer and then restart the computer.

Instead of completing the Windows XP Professional installation, the computer starts the Windows Welcome program, requiring you to enter additional setup information.

Because you will be deploying a large number of computers, you want to ensure that the disk image can be applied without additional user interaction. What should you do?

- A. Use a network-based RIS server to apply the disk image to new computers.
- B. On the test computer, run the Sysprep -factory command. Re-create the disk image by using the third-party software.
- C. Use Setup Manager to create a Sysprep answer file. Copy the answer file to a floppy disk, and insert the disk into new computers when the disk image is applied.
- D. Create an Unattend.txt answer file. Copy the file to the C:\Winnt\System32 folder on the test computer. Run the Sysprep utility and re-create the disk image by using the third-party software.

Answer: C

13. You are the desktop administrator for one of your company's branch offices. The network in the branch office consists of a single network segment, which contains a domain controller, a DHCP server, 10 Windows 2000 Server computers, and 50 Windows 2000 Professional computers. All servers and client computers are members of the company's Active Directory domain.

You purchase 50 new client computers for the branch office. Each new client computer contains a built-in PXE-compliant network adapter. You install and configure RIS on one of the Windows 2000 Server computers that is on the network in the branch office. You create a Windows XP Professional RIS image on the Windows 2000 Server computer.

You connect the new client computers to the network in the office, and you turn on each computer. Each computer displays a message stating that it cannot contact a PXE boot server. You verify that the RIS server is connected to the network.

You need to ensure that the new client computers can connect to the RIS server and can begin installing Windows XP Professional. What should you do?

- A. Ask a domain administrator to authorize the RIS server.
- B. Grant the Everyone group Allow - Read NTFS permission on the RIS image.

C. Install RIS on the domain controller. Copy the RIS image to the domain controller.

D. Add a reservation for the RIS server to the DHCP server.

Answer: A

14. You are the desktop administrator for your company. You need to deploy Windows XP Professional to 50 new computers. You want to use a fully automated installation process.

Each new computer is configured with a 20-GB hard disk, a CD-ROM drive, and a floppy disk drive. The computers do not contain network adapter cards.

You specify the company's standard installation settings and save them in an answer file.

You want to use the Sysprep utility to prepare the source computer for the deployment. Which two actions should you take? (Each correct answer presents part of the solution. Choose two.)

A. Place the answer file in C:\Windows\System.

B. Place the answer file in C:\Windows\System32.

C. Place the answer file in C:\Sysprep.

D. Place Sysprep.exe and Setupcl.exe in C:\Windows\System.

E. Place Sysprep.exe and Setupcl.exe in C:\Windows\System32.

F. Place Sysprep.exe and Setupcl.exe in C:\Sysprep.

Answer: CF

15. You are a help desk technician for your company, which is in the process of deploying Windows XP Professional to all client computers.

You upgrade Pierre's Windows 98 portable computer to Windows XP Professional. After the upgrade Pierre reports that some of his older software applications no longer work properly. Also, one of the hardware devices on his computer is not currently supported by Windows XP Professional. Pierre requests that you reinstall Windows 98 and all of his applications so that he can use his computer normally.

You need to restore Pierre's computer to its pre-upgraded state while retaining all of the applications, documents, and personal data on the computer. You want to accomplish this task in the minimum amount of time.

What should you do?

- A. Copy Pierre's documents and personal data to a shared folder on the network.
- B. Reinstall Windows 98 and Pierre's applications
- C. Copy the documents and personal data to the My Documents folder on Pierre's computer
- D. On Pierre's computer, run Setup.exe from the Windows 98 installation CD.
- E. On Pierre's computer, use the Add or Remove Programs Wizard to remove the Windows XP Professional Installation item.
- F. On Pierre's computer, use a third-party disk-imaging software utility to apply a disk image that contains Windows 98 and Pierre's applications

Answer: C

16. You are the desktop administrator for your company. You need to upgrade a Windows 98 computer to Windows XP Professional. Windows 98 is installed in a folder named C:\Win98. You need to ensure that the computer's applications and settings are retained after the upgrade.

You insert the Windows XP Professional CD-ROM into the computer and restart the computer. The text-based portion of Setup appears. The text on the screen states that Windows XP Professional will be installed in a folder named C:\Windows, not in the C:\Win98 folder.

You need to ensure that Windows XP Professional upgrades the existing Windows 98 installation. What should you do?

- A. Rename the C:\Win98 folder to C:\Windows.
- B. Modify the installation settings in the text-based portion of Setup so that Windows XP Professional is installed in the C:\Win98 folder.
- C. Restart the computer by using Windows 98. Then insert the Windows XP Professional CD-ROM into the computer and run Setup from the CD-ROM.
- D. Use the Windows XP Professional CD-ROM to create a set of Setup floppy disks. Restart the computer by using the first floppy disk in the set to launch Setup.

Answer: C

17. You are the desktop administrator for your company's sales department. Susan is a user in the sales department. Susan's computer currently runs Microsoft Windows NT Workstation 4.0. Susan uses a legacy application that is compatible with only Windows NT Workstation.

You want to install Windows XP Professional on Susan's computer. You plan to set up a dual-boot configuration so that Susan can run either Windows XP Professional or Windows NT Workstation.

Susan's computer has two hard disks, named drive C and drive G. You install Windows XP Professional on drive G. After Windows XP Professional is installed, Susan reports that Windows NT Workstation is no longer available.

You need to ensure that both operating systems are available on Susan's computer. What should you do?

A. Insert the Windows XP Professional CD-ROM into the computer.

Run the `Sfc.exe /scannow` command.

B. Insert the Windows XP Professional CD-ROM into the computer.

Run the `Winnt32.exe /cmdcons` command.

C. Start the computer by using an MS-DOS bootable floppy disk.

Run the `Attrib.exe -r -h -s c:\bootsect.dos` command.

D. Start the computer by using the Windows XP Professional CD-ROM.

From the Recovery console, run the `Bootcfg /rebuild` command.

Answer: D

18. You are a help desk technician for your company. All employees use Windows XP Professional computers.

A salesperson named Philippe receives a removable disk drive cartridge from his supervisor. Philippe now reports that he cannot edit files on the cartridge. When he tries to open any files or folders on the cartridge, he receives an "access denied" error message. Philippe's supervisor is currently out of the office.

You place the cartridge in the removable drive on your computer. You receive the same "access denied" error message when you try to access the files and folders.

You call Philippe's supervisor. She asks you to grant permission to access the contents of the cartridge only to Philippe. However, she also wants to prevent Philippe from changing permissions on the contents of the cartridge.

Which two actions should you take? (Each correct answer presents part of the solution. Choose two.)

A. As Administrator, take ownership of the files and folders.

B. As Administrator, grant your help desk user account Allow - Full Control permission on the files and

folders.

C. Grant Philippe Allow - Modify permission on the files and folders.

D. Grant Philippe Allow - Full Control permission on the files and folders.

E. Grant Philippe Allow - Take Ownership permission on the files and folders.

Answer: AC

19. You are the desktop administrator for your company's sales department. Susan is a user in the sales department. Susan's Windows XP Professional computer has a single hard disk, which is formatted as NTFS.

Susan's computer contains a folder named C:\Files1. The C:\Files1 folder is shared as Files1. Users in the sales department have permissions to create files in the Files1 shared folder.

Company policy allows interns to read files, but prohibits interns from creating files in the Files1 shared folder. Company policy allows members of the Sales group and the Marketing group to create files in the Files1 shared folder.

Carlos is an intern. He is a member of the Interns group, the Sales group, and the Marketing group. Susan reports that Carlos is able to create files in the Files1 shared folder.

You inspect Susan's computer to evaluate the Files1 shared folder. Permissions on Susan's computer are granted as shown in the following table.

?	Files1 shared folder	C:\Files1 folder
Interns group	Allow - Read	Allow - Write
Sales global group	?	Allow - Modify
Everyone group	Allow - Change	?
Marketing global group	?	Allow - Modify

You want ensure that Carlos cannot create files in the Files1 shared folder. What should you do?

A. On the Files1 shared folder, remove the Interns group's access.

B. On the C:\Files1 folder, remove the Interns group's access.

C. On the C:\Files1 folder, assign the Interns group Deny - Full Control permission.

D. On the C:\Files1 folder, assign the Interns group Deny - Write permission.

Answer: D

20. You are the desktop administrator for your company. The company's network consists of a single

Active Directory domain. All client computers run Windows XP Professional.

Bruno is a user in the graphics department. Bruno creates a new shared folder named GFXTemplates on his computer. The GFXTemplates folder contains custom templates that are used by various applications.

The permissions on the GFXTemplates folder must meet the following requirements:

- Users must be able to access the GFXTemplaes folder and all files it contains.
- Users must be able to add newly created template files to the GFXTemplates folder
- Users must not be able to delete any files in the GFXTemplates folder

Bruno configures permissions on the GFXTemplates folder as shown in the following table.

Group	NTFS folder permission	Shared folder permission
Everyone	Allow - Read	Allow - Read
Users	?	Allow - Change

The users in the graphics department report that they cannot add files to the GFXTemplates folder. What should you do to resolve this problem?

- A. Modify the NTFS permissions on the GFXTemplates folder to grant the Everyone group Allow - Modify permission.
- B. Modify the NTFS permissions on the GFXTemplates folder to grant the Users group Allow - Read and Allow - Write permissions.
- C. Modify the shared folder permissions on the GFXTemplates folder to grant the Everyone group Allow - Change permission.
- D. Modify the shared folder permissions on the GFXTemplates folder to grant the Users group Allow - Read and Allow - Write permissions.

Answer: B